



MARCELLO

Length: 25.90 metres (85' 0")

Beam: 7.15 metres (23' 5")

Draft: 1.7 metres (5' 5")

Number of Guests: 8

Number of Crew: 4

Built: 2015

Refit: 2023

Builder: Arcadia Yachts

Naval Architect: Francesco Guida

Hull Construction: GRP

Hull Configuration: Semi displacement

WiFi connection on board, Stabilisers underway, Stabilisers at anchor, Air conditioning

MARCELLO has an unconventional lifestyle with an aft-deck of 50sqm; it's a real floating home very light, bright and very spacious. The A85' main deck features interior and exterior areas, relaxing and dining zones which flow into each other, delighting guests at any time of the day. She offers a stylish and refined interior design, sound proofing and cruising comfort even in rough seas with zero speed stabilizers, a very rich selection of water sports equipment, great deck space and 4 en-suite guest cabins. It's the very first high-tech "jardin d'hiver" afloat.

Modern and innovative in design, MARCELLO provides generous and comfortable cruising while remaining kind to the environment. The unique Arcadia Construction System incorporates patented solar panels as well as a carbon neutral construction foot print.

The Aft-deck of approx. 100 sqm offer a communal space to enjoy where interior and exterior spaces become one. The master quarter is the biggest in its category: over 32 sqm of exclusive privacy! His semi-planing hull consumption cut by 20 to 40% compared to the major competitors.

With a highly professional crew of 4, your every whim can be taken care of, assuring you of an experience of a life time...

Key Features

- 1 Refit 2023 - Like new
- 2 Very low consumption
- 3 Zero Speed Stabilisers
- 4 Volumes very well maximized
- 5 Unique design



Dining table & Salon



Salon





Master Cabin



Master Cabin



En-suite Master Cabin



Twin Cabin



En-suite VIP Cabin



En-suite Double Cabin



Double Cabin



VIP Cabin



Close Up



Close Up



Close Up

SPECIFICATIONS

ACCOMMODATION

Number of guests: 8

Number of cabins: 4

Cabin configuration: 3 Double Cabins, 1 Twin Cabins

Bed configuration: 1 King Beds, 2 Queen Beds, 2 Single Beds

EQUIPMENT

Engines: 2x MAN 730hp Generators: 2 x KOLHER da 28 KW

Cruising Speed: 12 knots

Fuel Consumption: 150 l/h Litres/Hr

WATERSPORTS

Tender + Toys: Tender

2 Wakeboard

1 Wakesurf

1 Ski nautique

2 Paddles

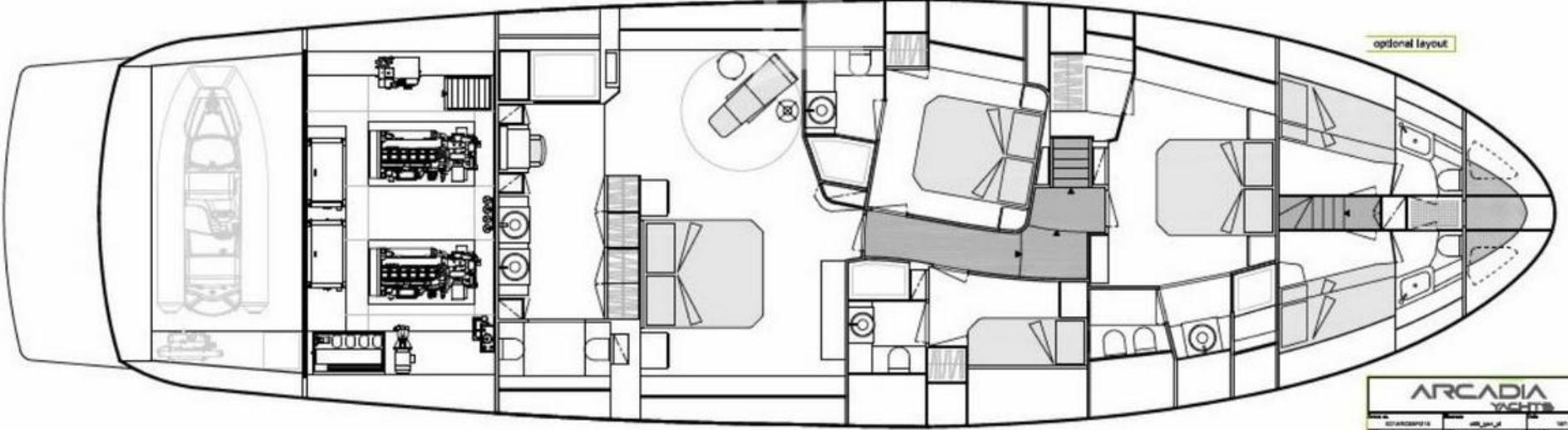
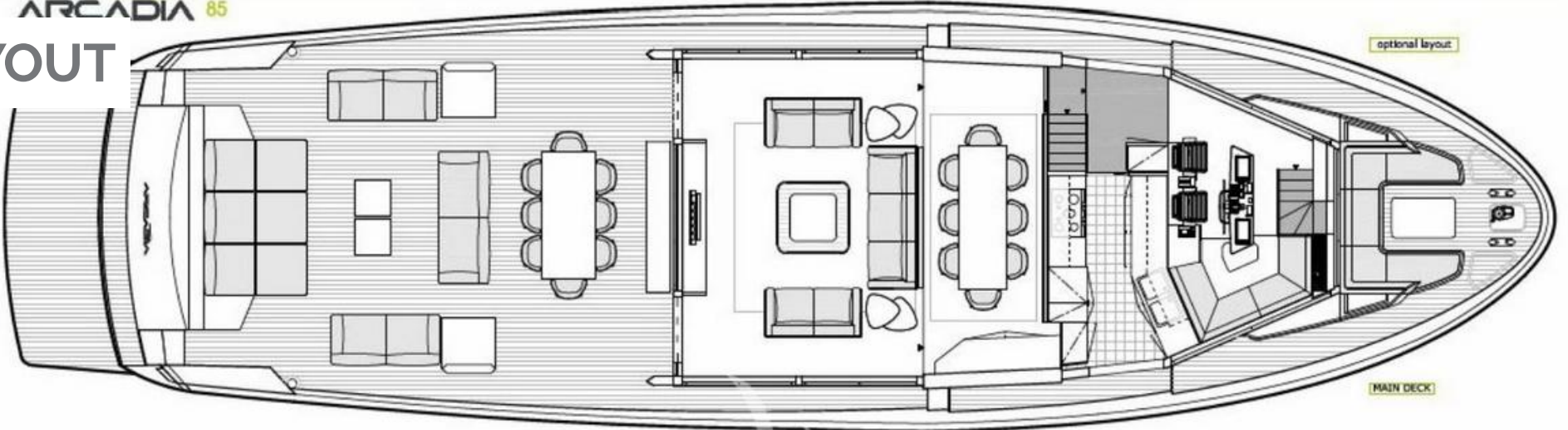
2 Seascooter JOBE

2 Kayaks

Snorkeling gear

LAYOUT

ARCADIA 85



ARCADIA YACHTS		
MODEL	اسم النموذج	سنة الإنتاج
ARCADIA 85	ARCADIA 85	2014
تصميم	صنع في	المواد
تصميم	صنع في	المواد

Triples General Plans

Disclaimer

This document is not contractual. All specifications are given in good faith and offered for informational purposes only. The publisher and company do not warrant or assume any legal liability or responsibility for the accuracy, completeness, or usefulness of any information and/or images displayed. Yacht inventory, specifications and charter prices are subject to change without prior notice. None of the text and/or images used in this brochure may be reproduced without written consent from the publisher.